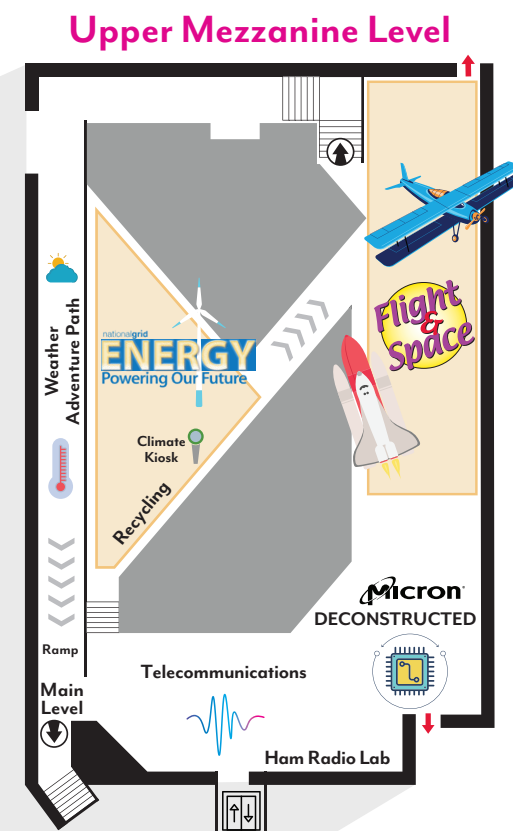
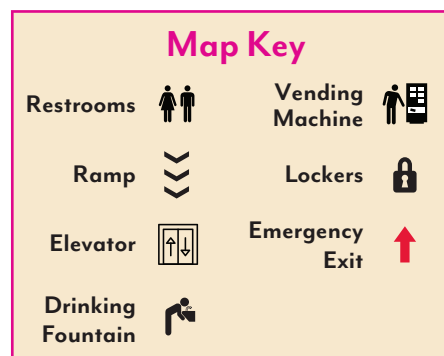


## Main Level

The logo for the MOST Visitor Map. It features the word "MOST" in a large, bold, black sans-serif font. A small pink asterisk is positioned to the upper right of the "T". A small pink rectangle is located beneath the "O". Below "MOST", the words "VISITOR MAP" are written in a smaller, grey, sans-serif font.

nationalgrid  
**ExploraDome**

## See a Show

10:30—Mars: The Ultimate Voyage

11:30—Ocean Odyssey

12:30—Mars: The Ultimate Voyage

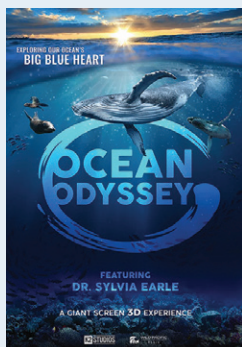
1:30—Ocean Odyssey

2:30—Serengeti



**Movie Night  
at the MOST**  
May 16, 6pm

**Moana**



## Daily Activities

### 11:30am—STEM Story Time

Join us every morning at 11:30 as we read STEM-based storybooks and offer activities to explore—perfect for little hands, curious minds, and book lovers!

### 12pm—Circuits & Chips Activities

Head to our Skill Bar in the Micron DECONSTRUCTED exhibit for some high-tech learning and fun competition.

### 2pm—MolinaCares Media Lab Demos

Engage with a live demonstration of a different technology or scientific concept each month.

### All Day—Make Table

Each month we have a different hands-on activity to make in our Tessa Machines & Makers sponsored by Marquardt exhibit.

## Amenities & Programs

### Sensory Friendly Science presented by Amanda Russell-Brown

FREE sensory kits are available at the front desk. Kits include fidget toys, stress balls, and noise-reducing headphones.

**Sensory Friendly Time** is the third Saturday of each month, 4:30–8pm. Free for members, \$5 for non-members. ASL-interpreted, 25-minute National Grid ExploraDome Show at 5:30 (\$6).

### \*NEW\* Late Till 8 / Movie Night at the MOST

Stay LATE the third Thursday of every month, when we're open until 8pm for after-hours museum fun, plus add on a family-friendly movie at 6pm for just \$6 per person!

### Refreshments

Snacks are available from the Solvay Bank Concessions or vending machines. Feel free to bring your own meal in and enjoy your food in the National Grid ExploraDome or the STEAM Café.

### Family Place

This quiet area in the upper theater lobby is for tending to the needs of babies and young kids and is open to all parents and guardians. Changing tables are available in Family Place and every restroom.

## Memberships

*ALL levels get free admission, discounts on birthday parties and day camps/education programs, discounted ExploraDome passes, Science Shop discounts, and free or discounted entry at ASTC member institutions.*

**\*NEW! Household Premier—\$179:** Two adults and children/grandchildren under 18. PLUS one caregiver who can attend with member children. Four FREE guests when one member is present. Eight National Grid ExploraDome and MOST combo passes. 20% discount in the Science Shop year-round. Additional discounts or free admission at more than 2,000 institutions, including Strong Museum of Play!

**Household Plus—\$119:** Two adults and children/grandchildren under 18. One caregiver who can attend with member children. Two FREE guests when one membership cardholder is present.

**Household—\$99:** Two adults and children/grandchildren under 18

**Dual—\$79:** One named person plus a second named person or guest.

**Individual—\$59:** One adult

**EBT Household—\$29:** Two named adults and their children under 18/grandchildren under 18. (*must be purchased in person with ID*)

**Learn more at [most.org/members](https://most.org/members)**

*Buy online or at admissions*

**Buy or gift a membership today!**

See our daily schedule and upcoming events at [most.org/events](https://most.org/events)

Follow us on social media to learn about upcoming events



Sponsored by

